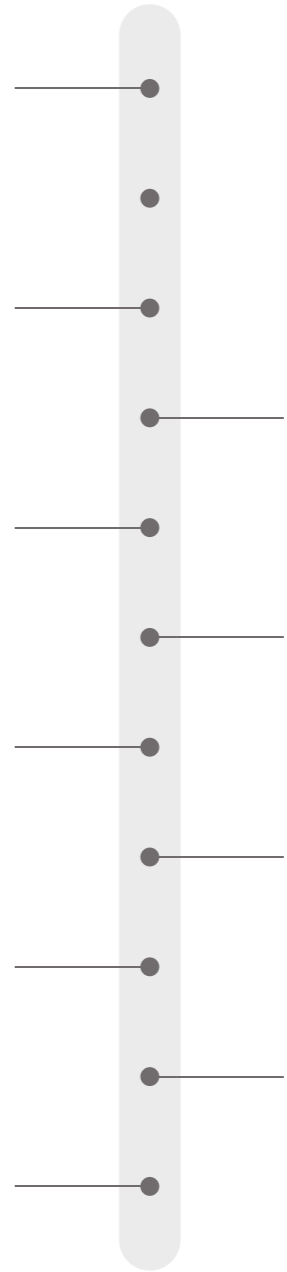
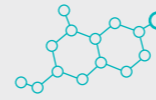
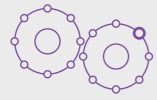




中国建筑材料集团有 限 公 司
社会责任报告

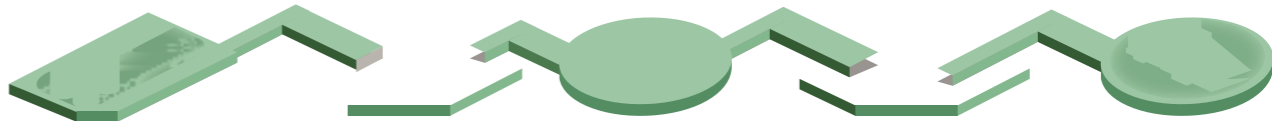
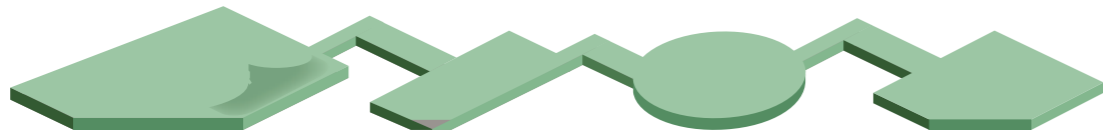


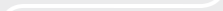
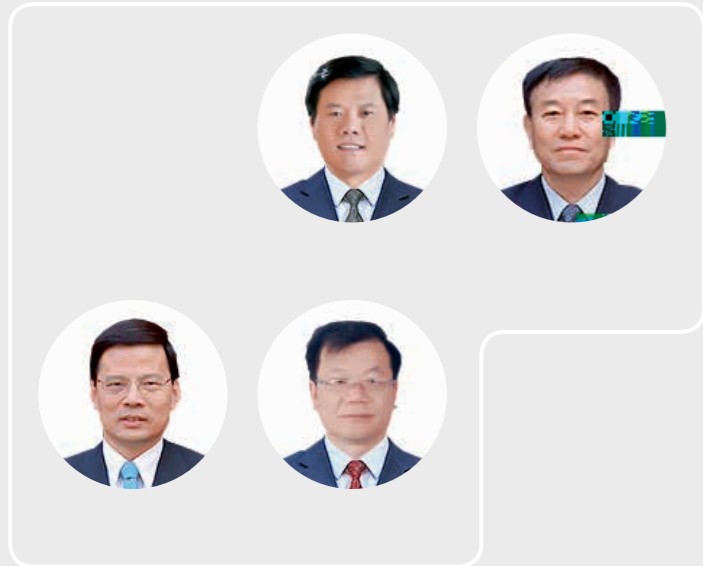
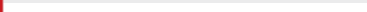
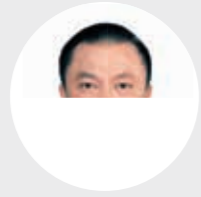






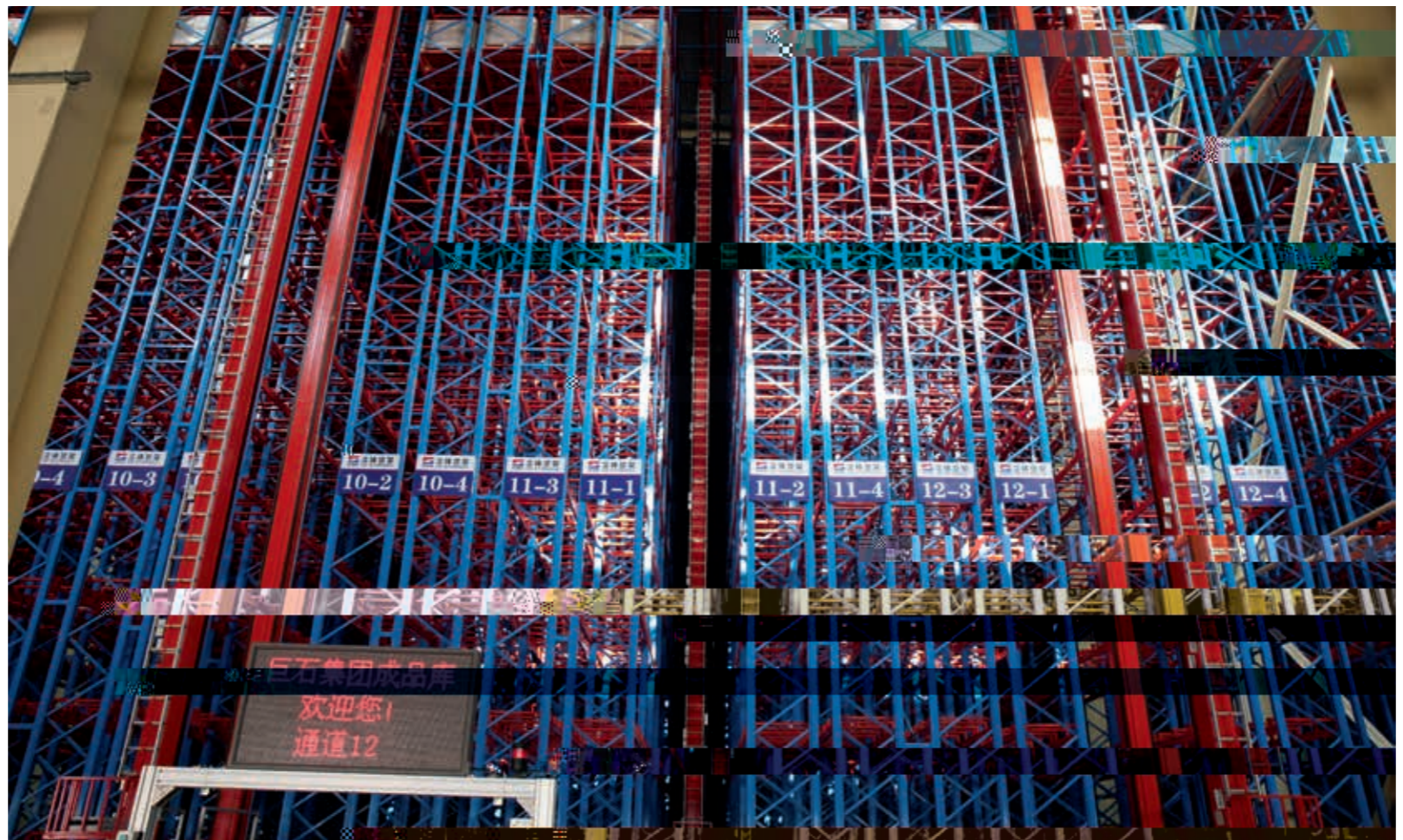
Handwritten signature







2.4



343
10

5



V V



2014

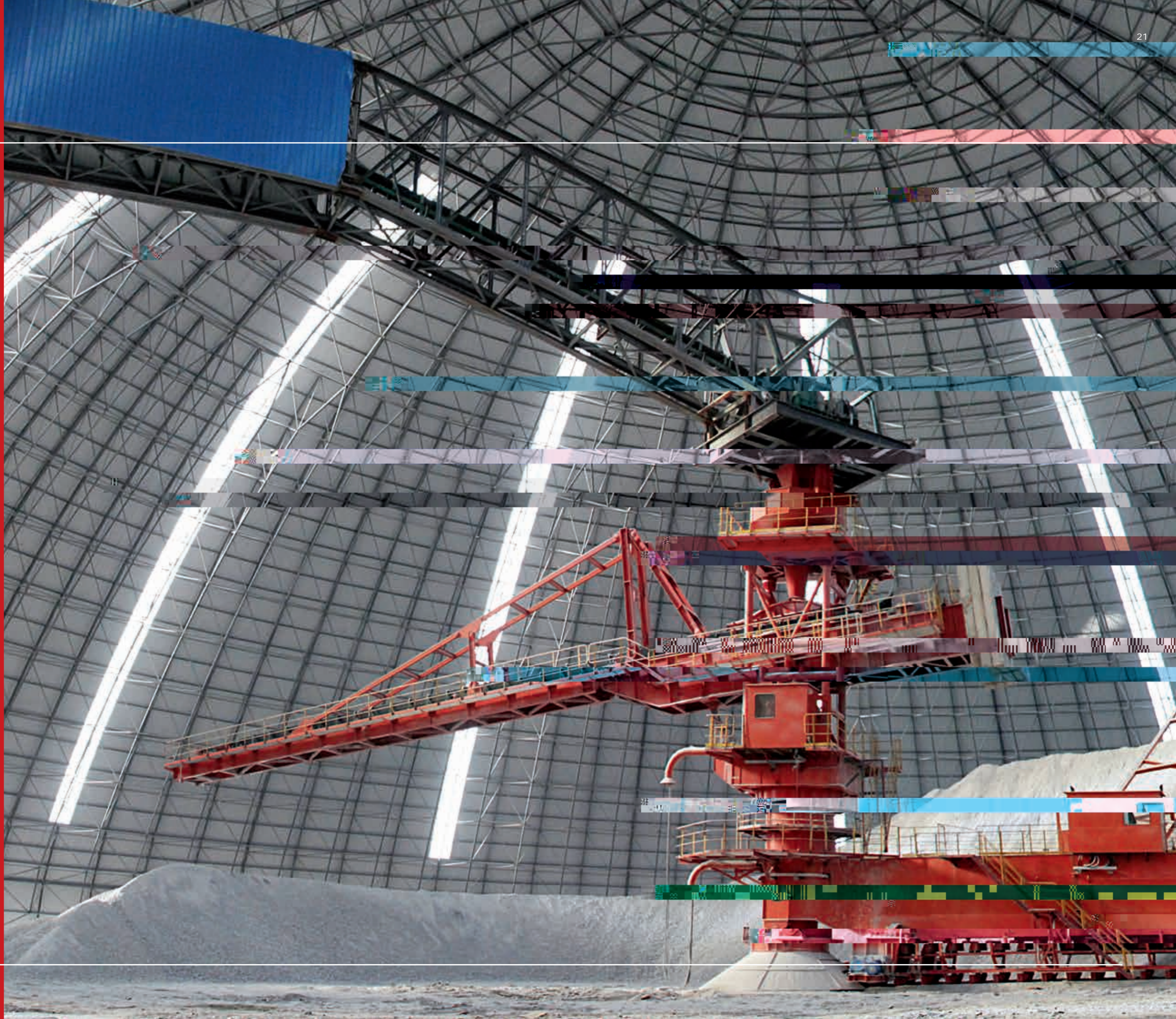
2013

2012

2011

2010





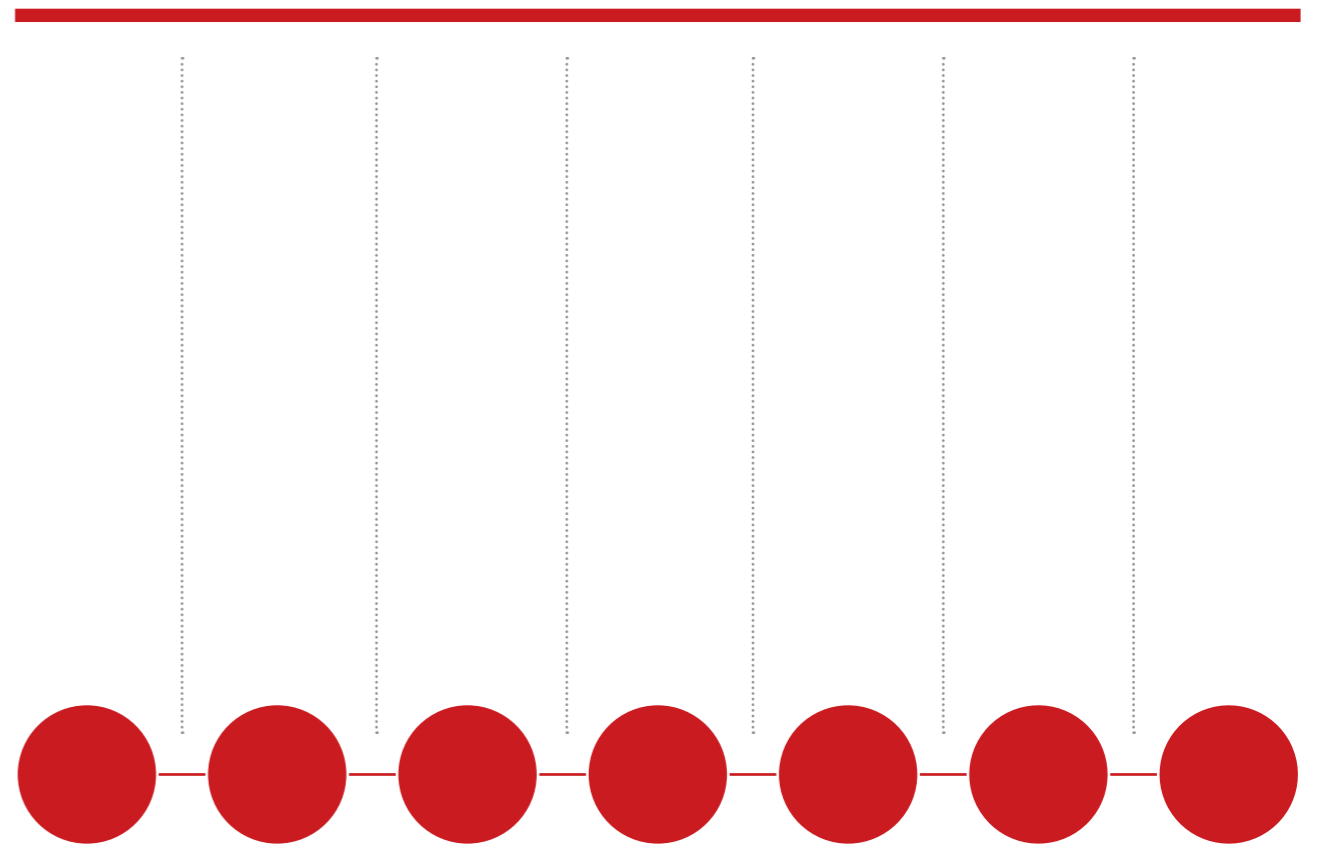


2504.3

130.1

146.4

10.9



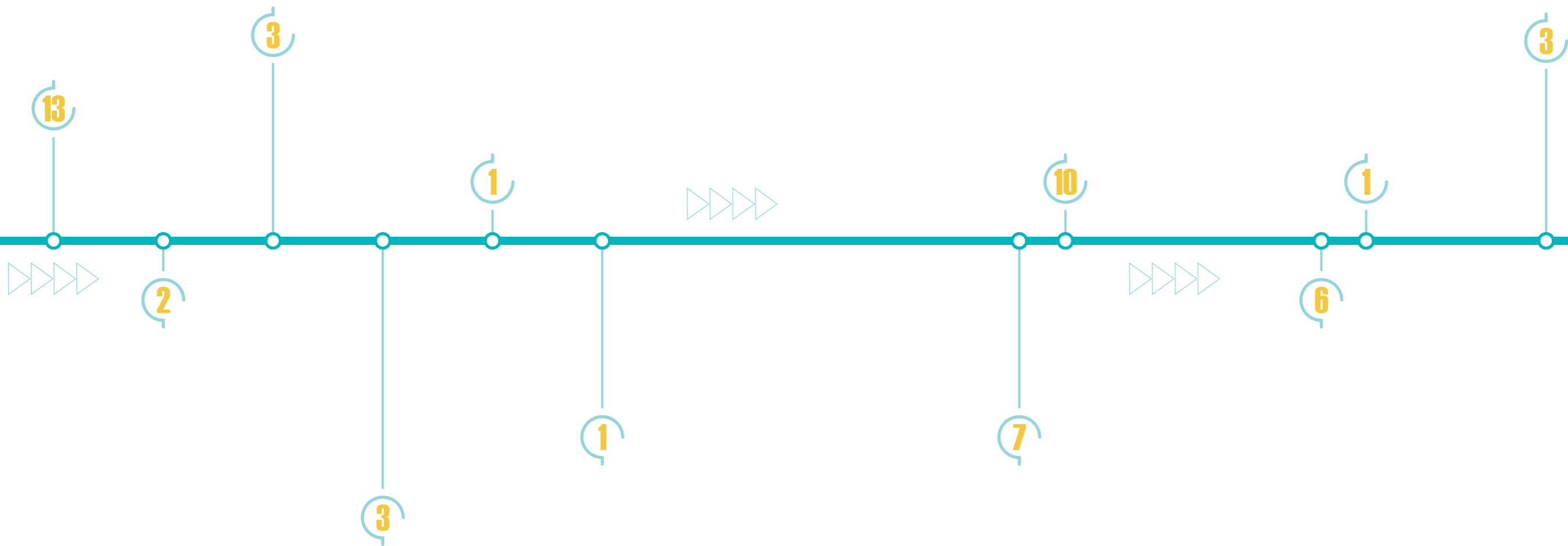




4255

117

21



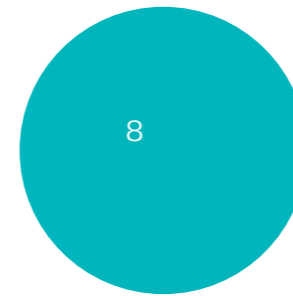
61.7

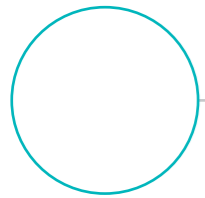
7.6

2300



349







-
-
-
-

-
-
-
-

4.2

27



-
-
-
-

693

37.5

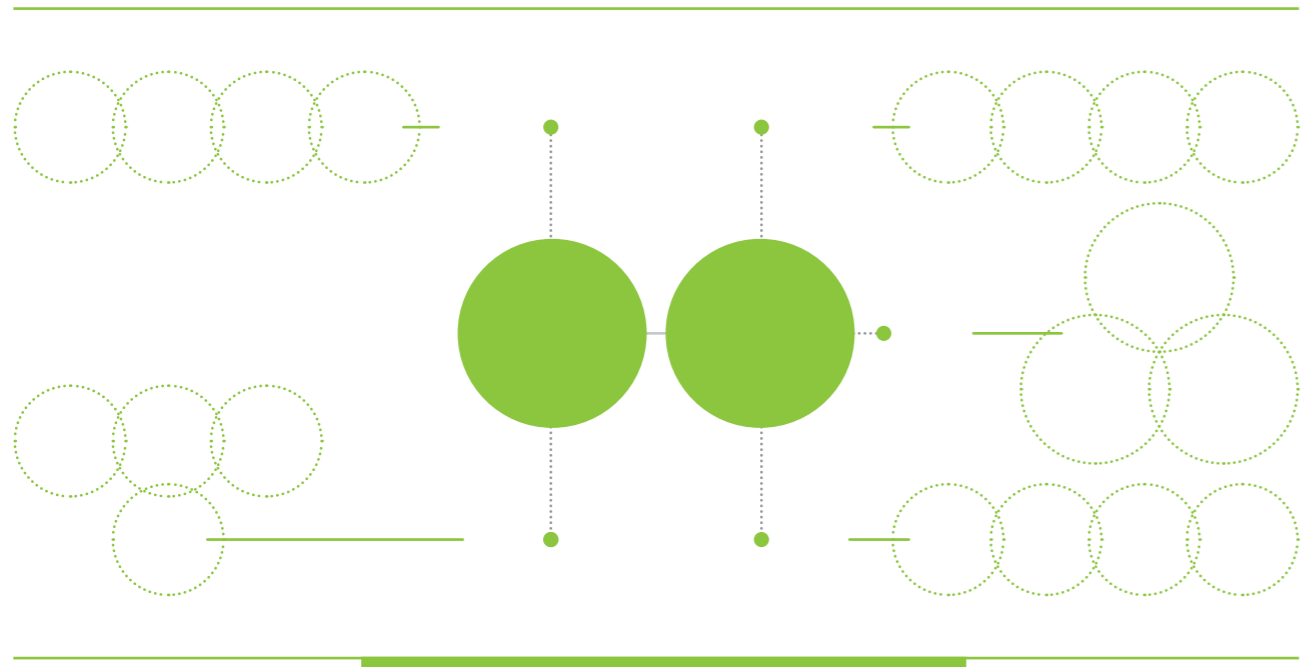
18.0

2003²¹

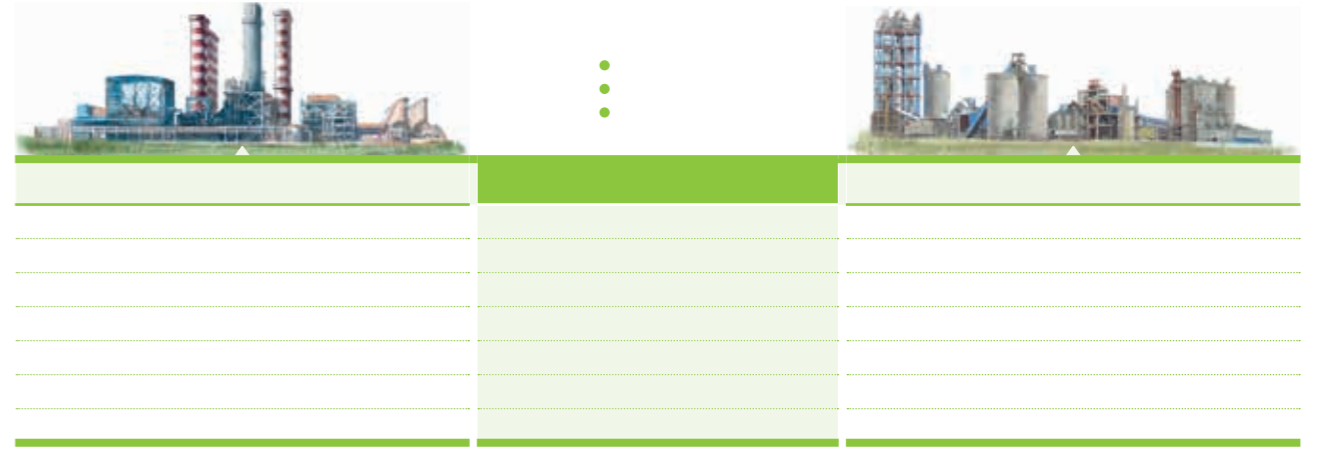
1

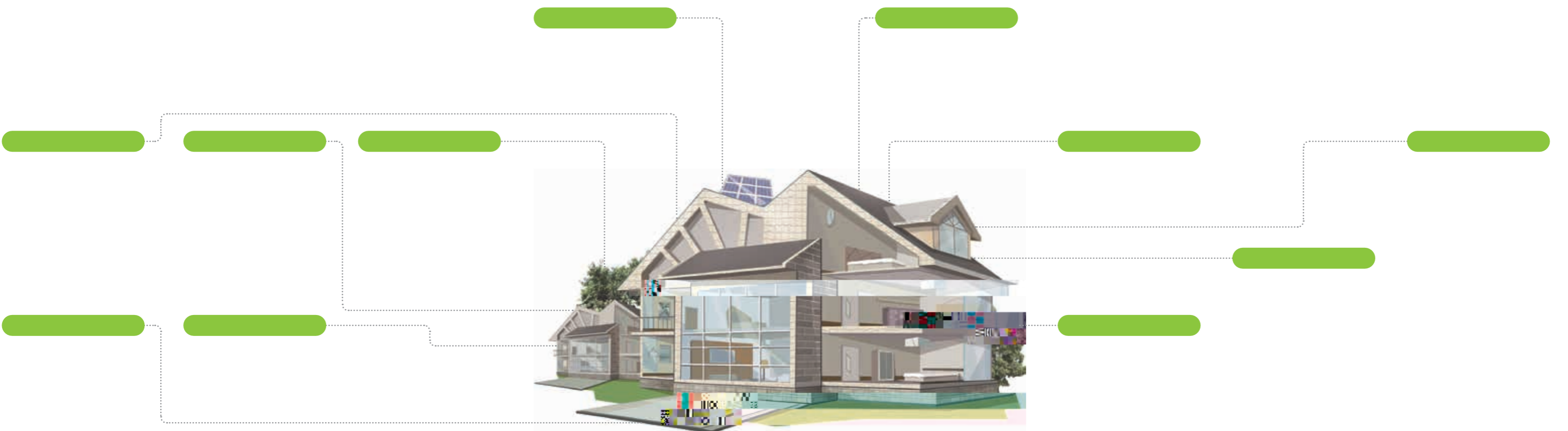
151





7881







17.7

444

10.6

• •

• •

•

•

•

3.1:1

1.9

27.3

92.3

56.2

90.6

3520





14.9

4.3



0

6.4



18.8

95.0



3.6

3120

2263

1637.6

9668

19.7





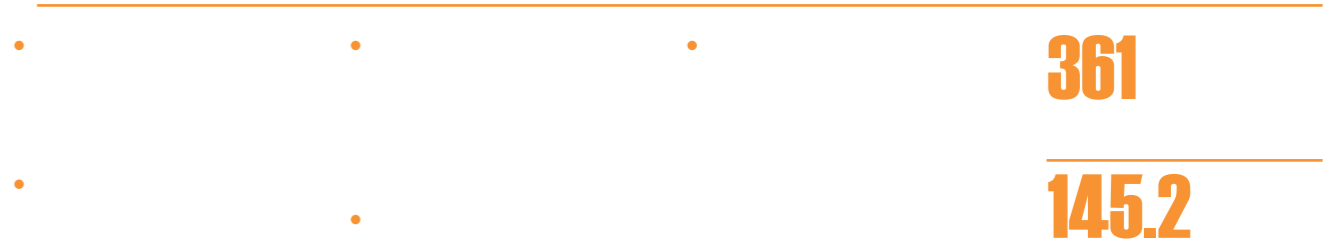




96.1

57.4

67.7



361

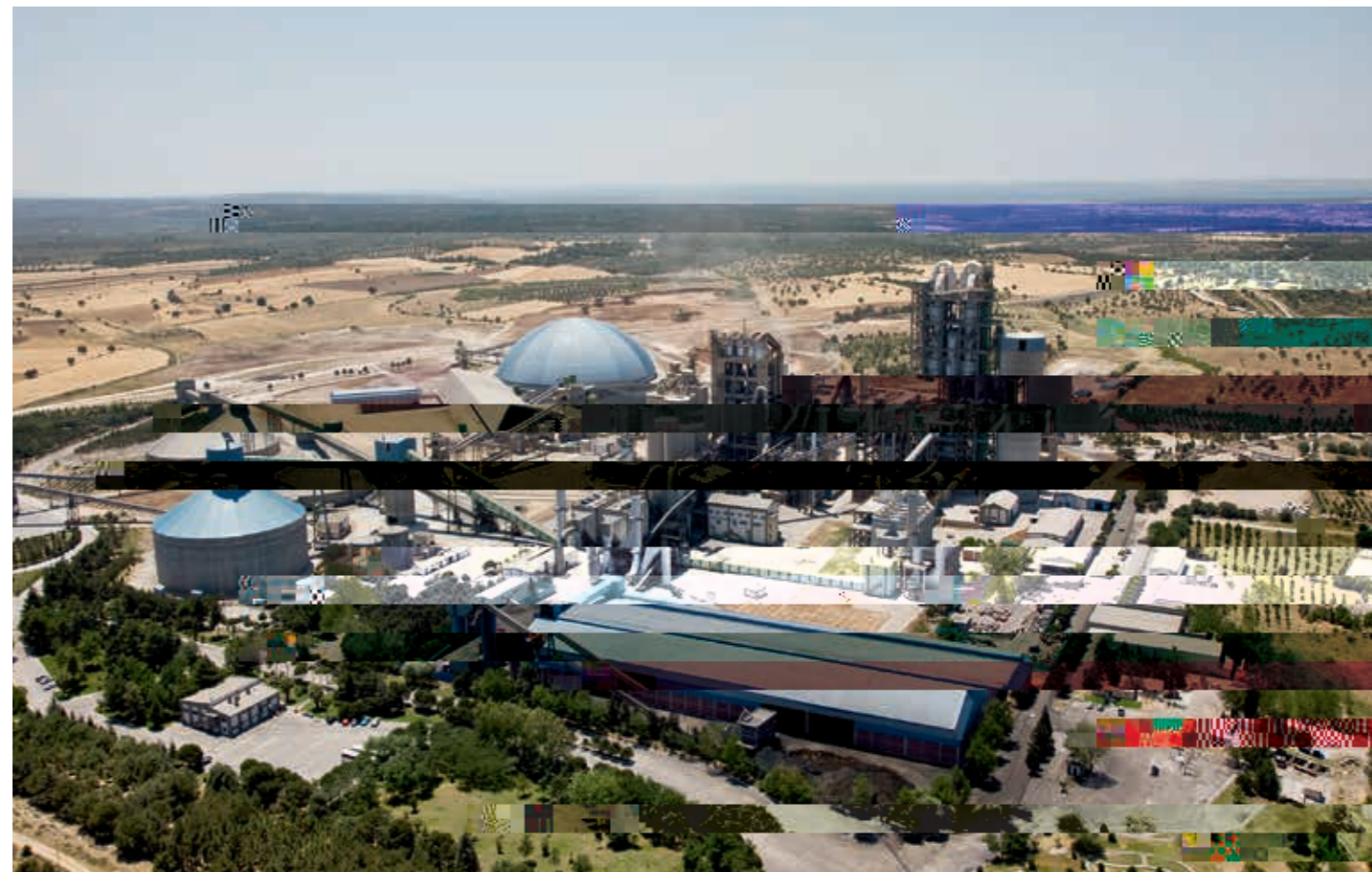
145.2

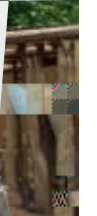
2.4

99.5

51

2080.5

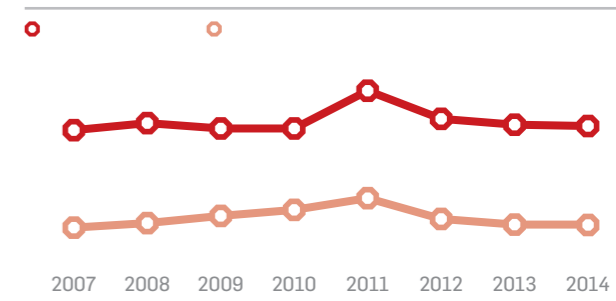
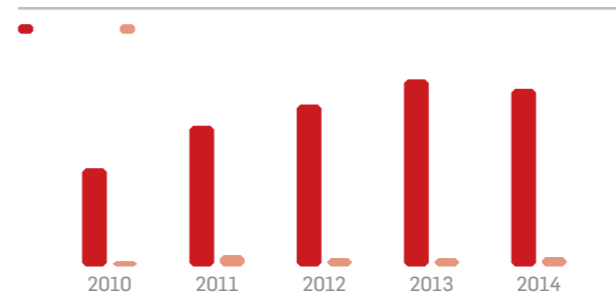
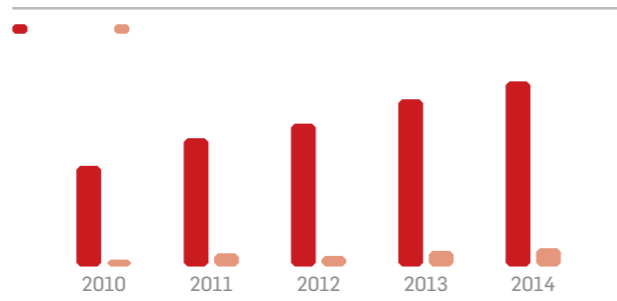






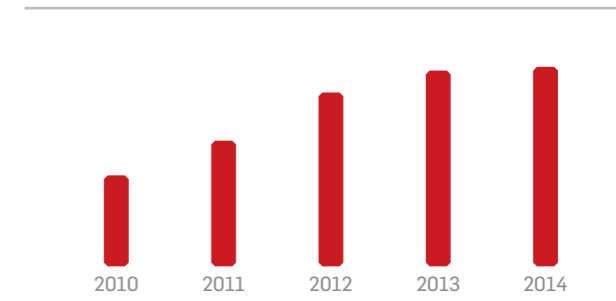
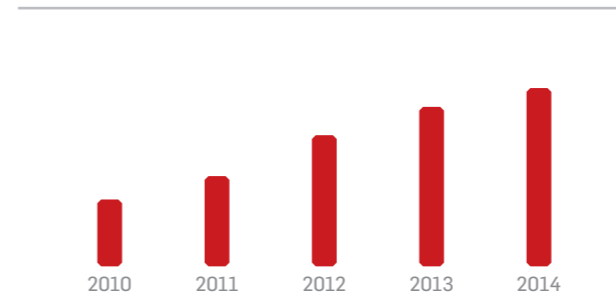
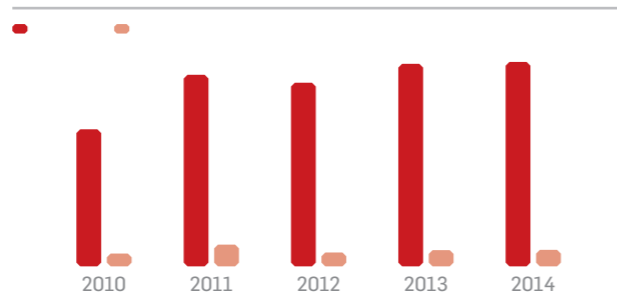
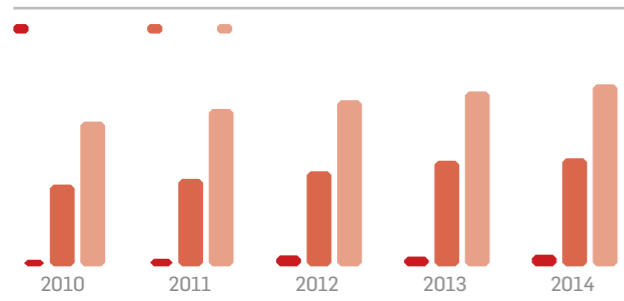
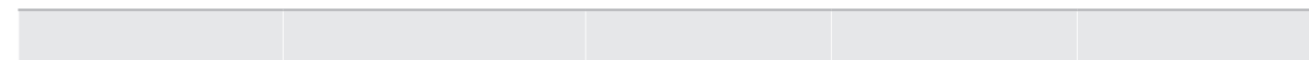
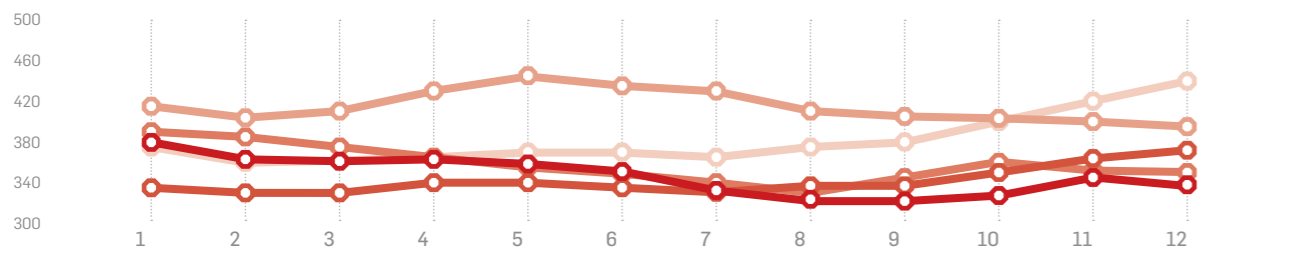
500

2014	2013	2013	
------	------	------	--



P.O.42.5

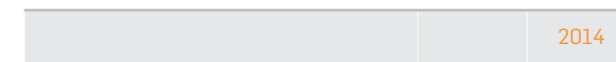
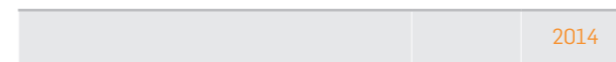
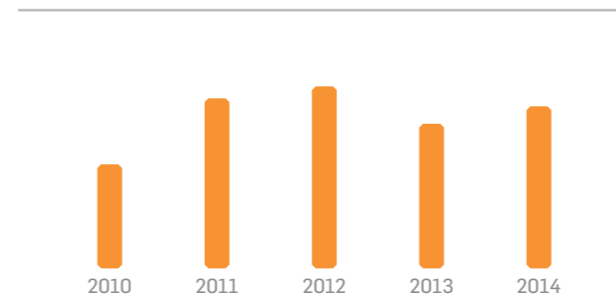
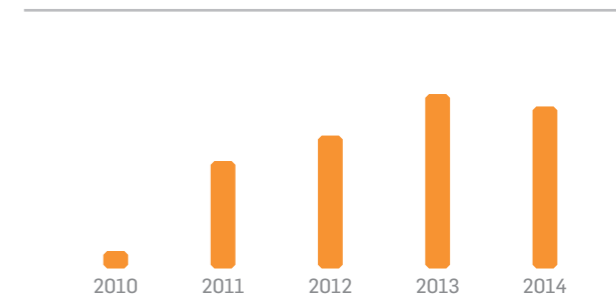
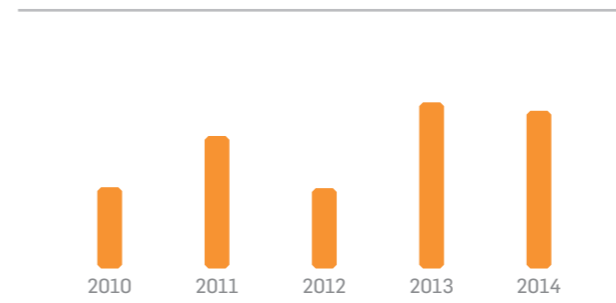
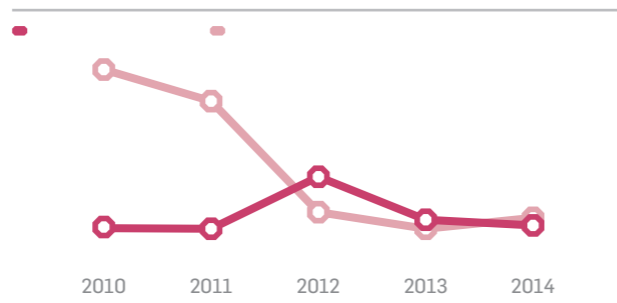
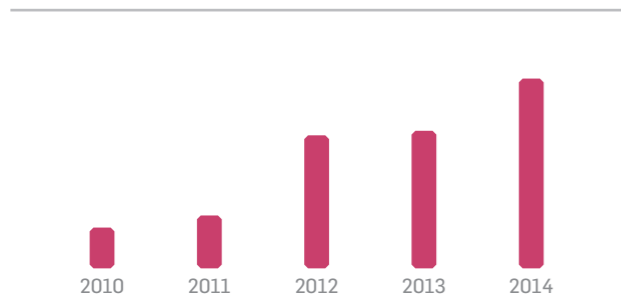
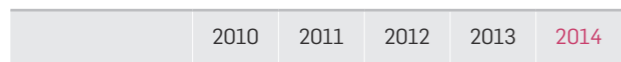
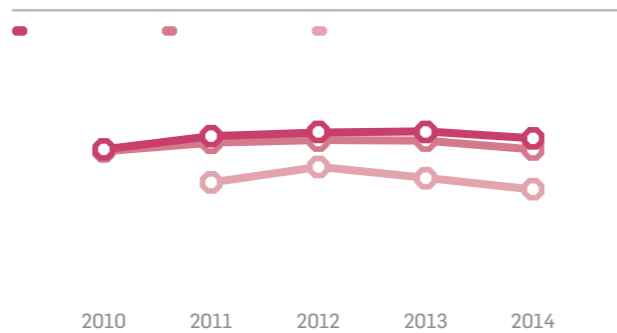
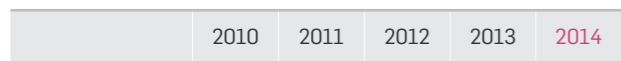
○ 2010 ○ 2011 ○ 2012 ○ 2013 ○ 2014



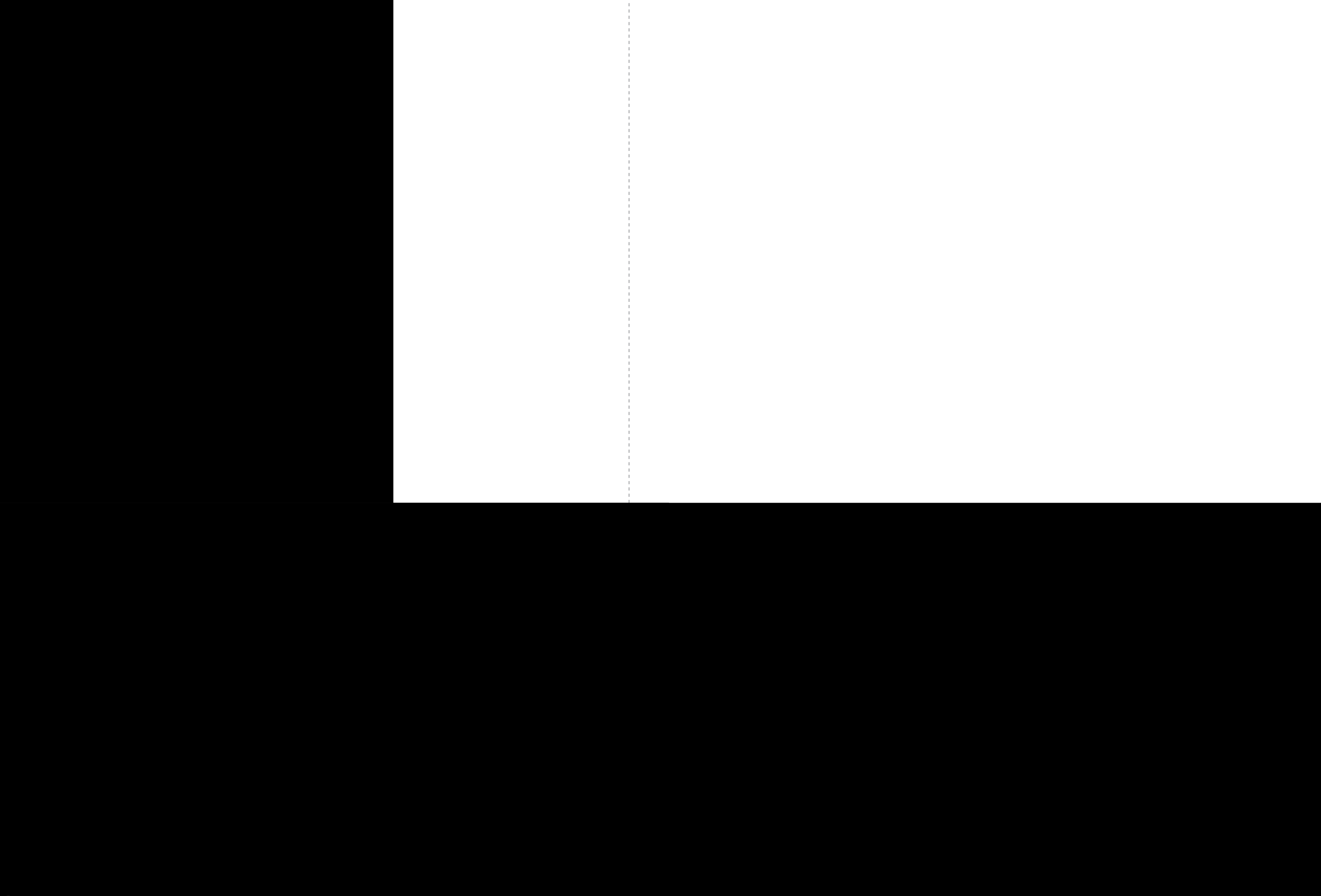
201020112012201320142015201620172018201920202021202220232024

--	--	--

--	--	--









人民

